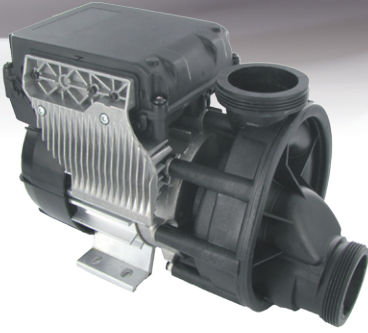


The latest innovation
for variable speed



Applications

Pump for whirlpool baths and showers

Technical features

Pump body in polypropylene

Built-in frequency converter

Perfect linear speed control

Reducing the Motor Heating

Efficiency increased to get more performance with less power (20%)

Silent Pump

Easy to Use

Dry Run & Thermal Overload Protection

2 Versions available :

- as a master board
- as a slave (PWM communication)

Inlet :

Type H :

Ø Int. G1" female

Type L :

Ø Ext. G1"1/2 male - Ø Int. 32

Ø Ext. G2" male - Ø Int. 40

Type K :

Ø Ext. G2" male - Ø Int. 40

Ø Ext. G2"1/4 male - Ø Int. 50

Outlet :

Type H :

Ø Ext. G3/4" male

Type L :

Ø Ext. G1"1/2 male - Ø Int. 32

Ø Ext. G2" male - Ø Int. 40

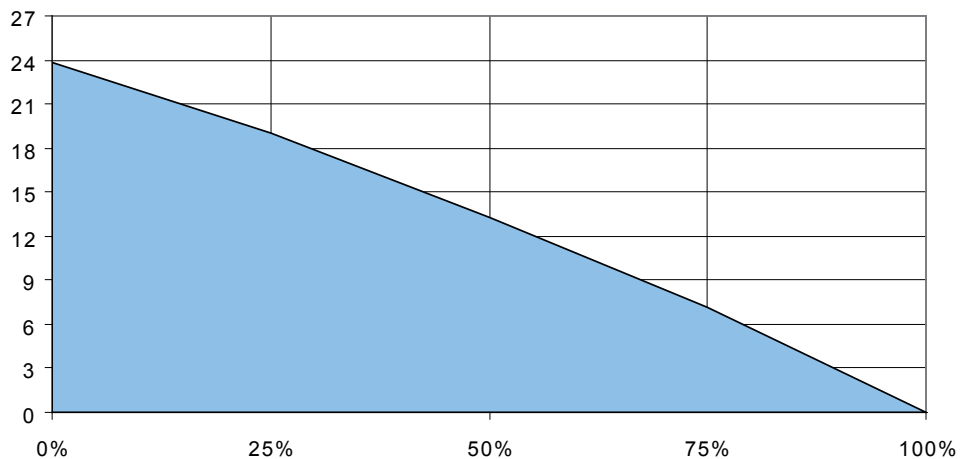
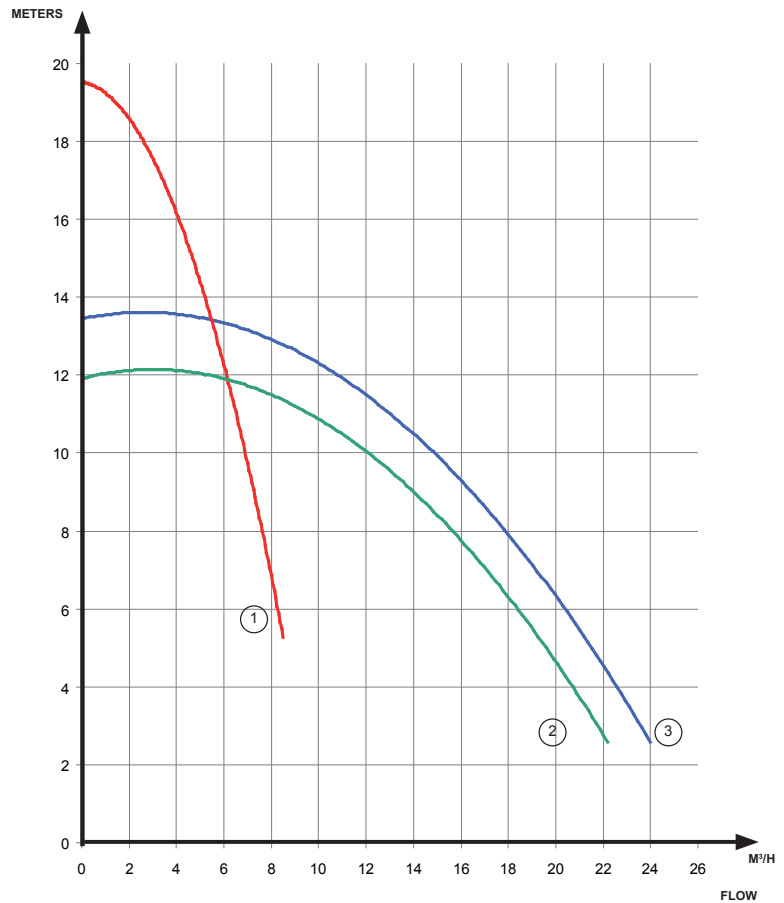
Type K :

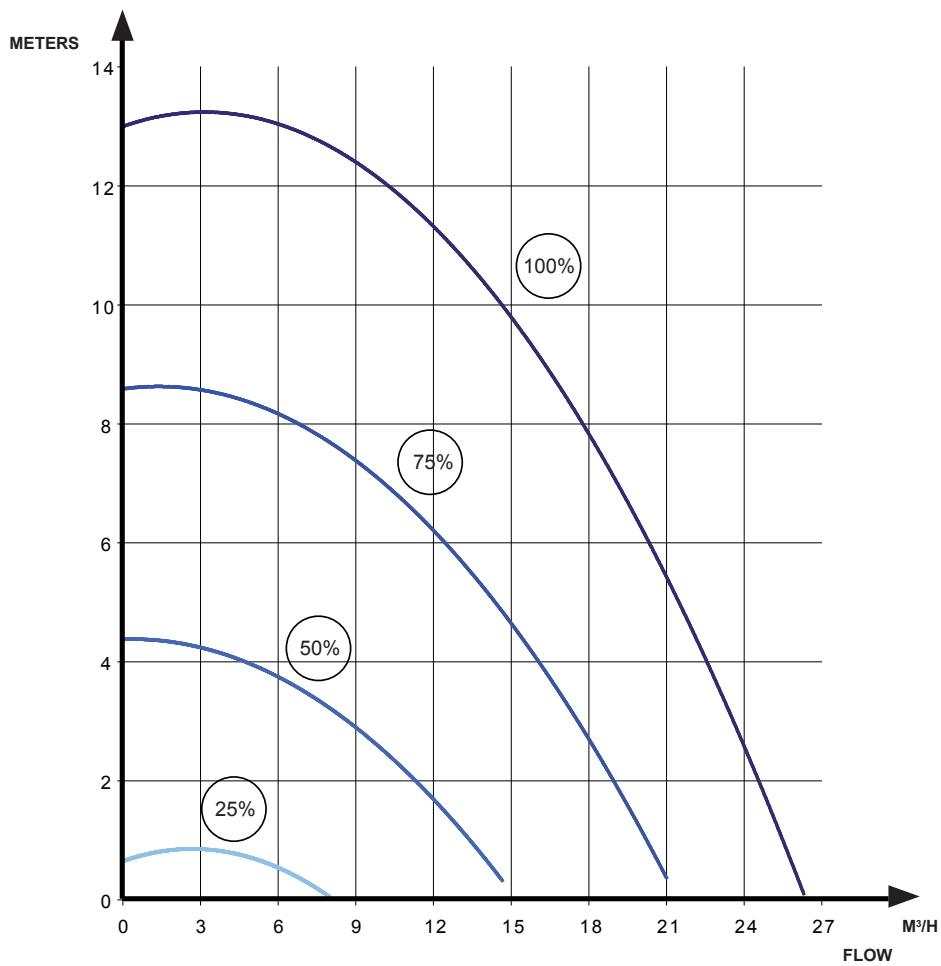
Ø Ext. G1"1/2 male - Ø Int. 32

Ø Ext. G2" male - Ø Int. 40

Ø Ext. G2"1/4 male

Single Phase Type	Electric Power (W)	Max Flow (M ³ /hr)	Hmin (m)	Curves
PVF 250 H4B	900	8.5	5	1
PVF 270 L/K4B	1100	21.8	3	2
PVF 299 L/K1B	1200	23.8	3	3





Options

230 V / 50 Hz
220 V / 60 Hz
110 V / 60 Hz

Pneumatic switch (CP)

Electric cable (EC)
0.5 / 1 / 1.5 / 2 / 2.5m

1 function electronic card for electronic keypad
+ water level sensor (1F-EL)

1 function electronic card for pneumatic controller
+ water level sensor (1F-CP)

General

These pumps comply with the standards and directives in force

Conform to standards
EN 60 335 - 1
EN 60 335 - 2 - 41
CE

According to the CE regulation

Validated and qualified by the organization TÜV

	Types	Ref.	Illustrations
Tee Pump Fittings	Tee pump Ø 33.7 (thread 2")	1112330007	
	Tee pump Ø 32 (thread 2"1/4)	1112320007	
	Tee pump Ø 25 grooved	1112250007	
	Tee pump «Y» Ø 25	0313630001	
Pump Union Fittings	Pump union (thread ASA)	1112000008	
	Pump union Ø 50 (thread 2"1/4)	1112230018	
	Pump union Ø 40 (thread 2")	1112230028	
	Pump union elbow 90° Ø 50	1112590007	
	Pump union elbow 45° Ø 50	1112540007	
Leg for jet pump	Silent block Silent block (x4) Silent Block Ø 20 / H 20 Silent Block Ø 20 / H 30	2417000008 2417041018 2417000018 2417300018	